



SANYO Semiconductors

DATA SHEET

LV4985VH — Bi-CMOS IC For Portable Electronic Device Use 1.2W × 2ch BTL Power Amplifier

Overview

The LV4985VH has a 2-channel power circuit amplifier including an electronic volume control built in. It has a function for switching the headphone driver and also has a standby function to reduce the current drain. It is a power amplifier IC optimal for driving the speakers used in portable equipment and low power output equipment.

Applications

Portable DVD players, active speakers, compact LCD-TV/LCD monitors, notebook PCs and more.

Features

- 2-channels BTL power amplifier built-in : Standard output power = 1.2W ($V_{CC} = 5V$, $R_L = 8\Omega$, THD = 10%)
Output coupling capacitor is unnecessary because of differential output type.
- Volume function built-in (variable range: 69dB standard), DC voltage control system
- Mute function built-in (shared with VOL-min)
- Standby function built-in (three-value control \Rightarrow Shared with the second amplifier stop control pin) :
Standard standby current = 0.01 μ A ($V_{CC} = 5V$)
- Second amplifier stop control function built-in (three-value control \Rightarrow Shared with the standby pin) :
Headphone driver switch (for BTL/SE switch)
Simple MUTE (Only BTL power amplifier path)
- Thermal protection circuit built-in
- Operation supply voltage range : $V_{CC} = 4.5V$ to 5.5V
- Output phase compensation capacitor not necessary

■ Any and all SANYO Semiconductor Co.,Ltd. products described or contained herein are, with regard to "standard application", intended for the use as general electronics equipment (home appliances, AV equipment, communication device, office equipment, industrial equipment etc.). The products mentioned herein shall not be intended for use for any "special application" (medical equipment whose purpose is to sustain life, aerospace instrument, nuclear control device, burning appliances, transportation machine, traffic signal system, safety equipment etc.) that shall require extremely high level of reliability and can directly threaten human lives in case of failure or malfunction of the product or may cause harm to human bodies, nor shall they grant any guarantee thereof. If you should intend to use our products for applications outside the standard applications of our customer who is considering such use and/or outside the scope of our intended standard applications, please consult with us prior to the intended use. If there is no consultation or inquiry before the intended use, our customer shall be solely responsible for the use.

■ Specifications of any and all SANYO Semiconductor Co.,Ltd. products described or contained herein stipulate the performance, characteristics, and functions of the described products in the independent state, and are not guarantees of the performance, characteristics, and functions of the described products as mounted in the customer's products or equipment. To verify symptoms and states that cannot be evaluated in an independent device, the customer should always evaluate and test devices mounted in the customer's products or equipment.

LV4985VH

Specifications

Maximum Ratings at $T_a = 25^\circ\text{C}$

Parameter	Symbol	Conditions	Ratings	Unit
Maximum supply voltage	V_{CC} max		6	V
Allowable power dissipation	P_d max	* Mounted on a specified board.*	1.45	W
Maximum junction temperature	T_j max		150	$^\circ\text{C}$
Operating temperature	T_{opr}		-20 to +75	$^\circ\text{C}$
Storage temperature	T_{stg}		-40 to +150	$^\circ\text{C}$

* Specified board (SANYO Semiconductor Evaluation board) : 50mm × 50mm × 1.6mm, glass epoxy both side.

Operating Conditions at $T_a = 25^\circ\text{C}$

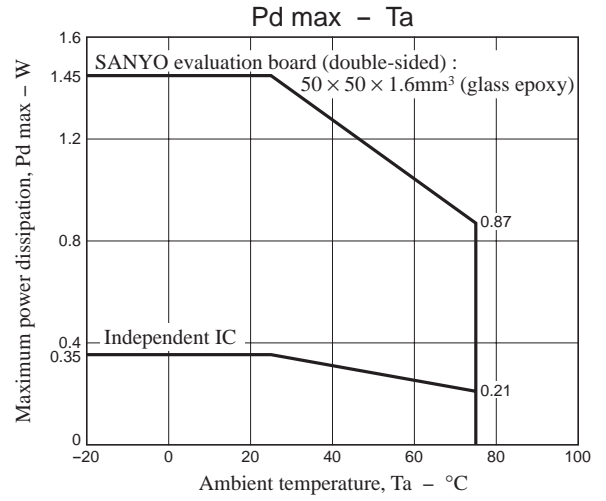
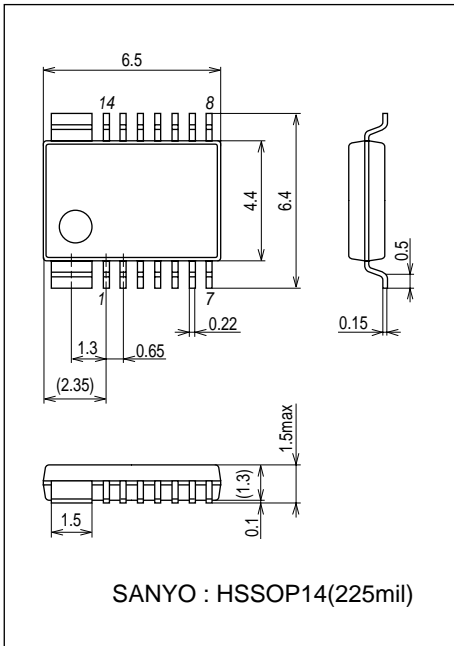
Parameter	Symbol	Conditions	Ratings	Unit
Recommended supply voltage	V_{CC}		5	V
Recommended load resistance	R_L		8 to 32	Ω
Allowable operating supply voltage range	V_{CC} op		4.5 to 5.5	V

Electrical Characteristics at $T_a = 25^\circ\text{C}$, $V_{CC} = 5\text{V}$, $f_{in} = 1\text{kHz}$, $R_L = 8\Omega$, $V_9 = 2.5\text{V}$, $V_{10} = 3\text{V}$, pwr-amp-VG = 20.7dB

Parameter	Symbol	Conditions	Ratings			Unit
			min	typ	max	
Quiescent current drain	I_{CCOP}	No signal, no load		11.5	20	mA
Standby current drain	I_{STBY}	No signal, $V_9 = 0.3\text{V}$		0.01	5	μA
Maximum output power	P_O max	THD = 10%	0.8	1.2		W
BTL voltage gain	VG	$V_{in} = -30\text{dBV}$	25.8	27.8	29.8	dB
Volume voltage gain	VGVOL	$V_{in} = -30\text{dBV}$, volume output pin		7.1		dB
Channel balance	CHBAL	$V_{in} = -30\text{dBV}$	-2	0	+2	dB
Total harmonic distortion	THD	$V_{in} = -30\text{dBV}$		0.4	1	%
Maximum output noise voltage	V_N max	$R_g = 620\Omega$, 20 to 20kHz		0.7	1.4	mVrms
Minimum output noise voltage	V_N min	$R_g = 620\Omega$, 20 to 20kHz		0.06		mVrms
Channel separation	CHsep	$V_{in} = -20\text{dBV}$, $R_g = 620\Omega$	58	66		dB
Volume variable range	WVOL	$V_{in} = -30\text{dBV}$		69		dB
Mute attenuation level	ATTMT	$V_{in} = -10\text{dBV}$, $V_{10} = 0.25\text{V}$, 1kHz-BPF	-72	-82		dBV
Ripple rejection ratio	SVRR	$R_g = 620\Omega$, $f_r = 100\text{Hz}$, $V_r = -20\text{dBV}$		30		dB
Output DC offset voltage	VOS		-30		+30	mV
Reference voltage	VREF	Pin 6 voltage, Amplifier operation reference DC voltage source		2.5		V
Volume maximum control voltage	MXVOL	Pin 10 control voltage	2.8			V
Muting control voltage	VMT	Pin 10 control voltage	0		0.25	V
High level control voltage (pin 9)	V9CH	Full operating mode (BTL mode)	2.3		V_{CC}	V
Middle level control voltage (pin 9)	V9CM	Second amplifier non-operating mode (SE mode)	1.3		1.7	V
Low level control voltage (pin 9)	V9CL	Standby (shutdown) mode	0		0.3	V

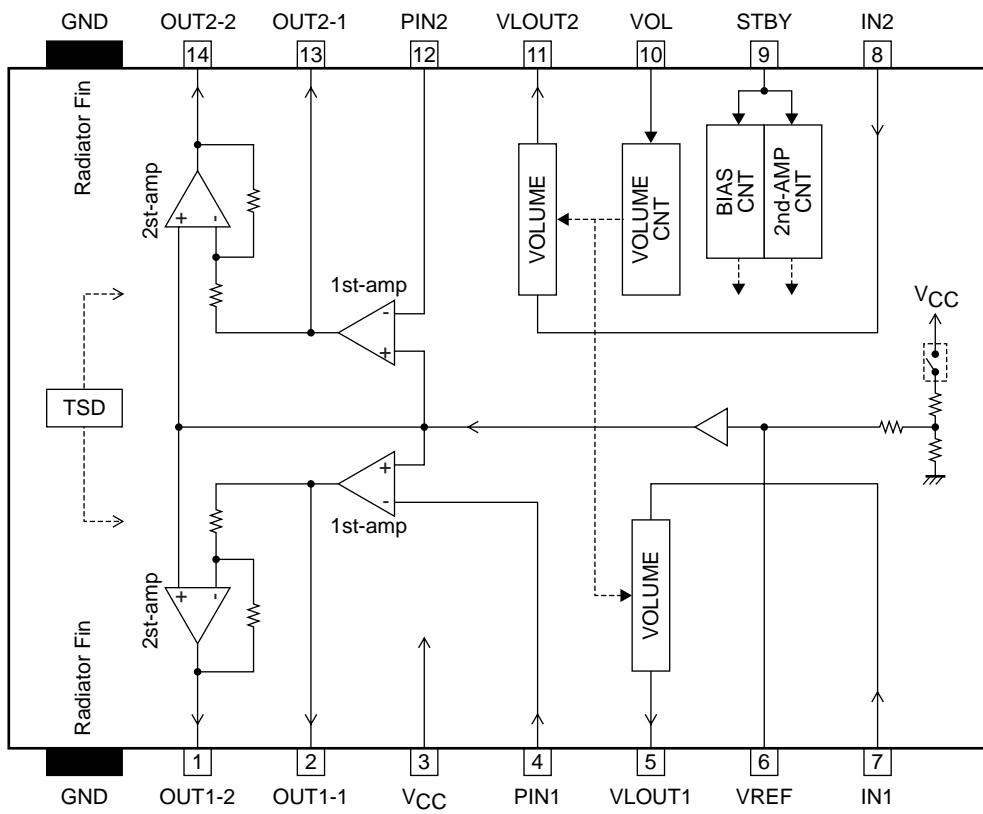
Package Dimensions

unit : mm (typ)
3313

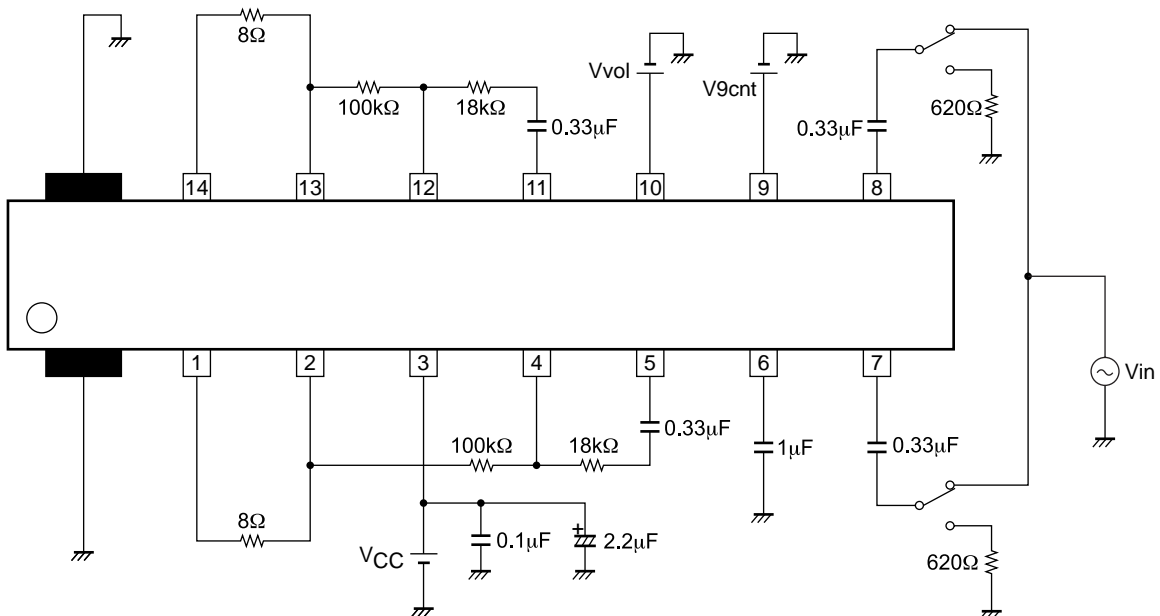


LV4985VH

Block Diagram

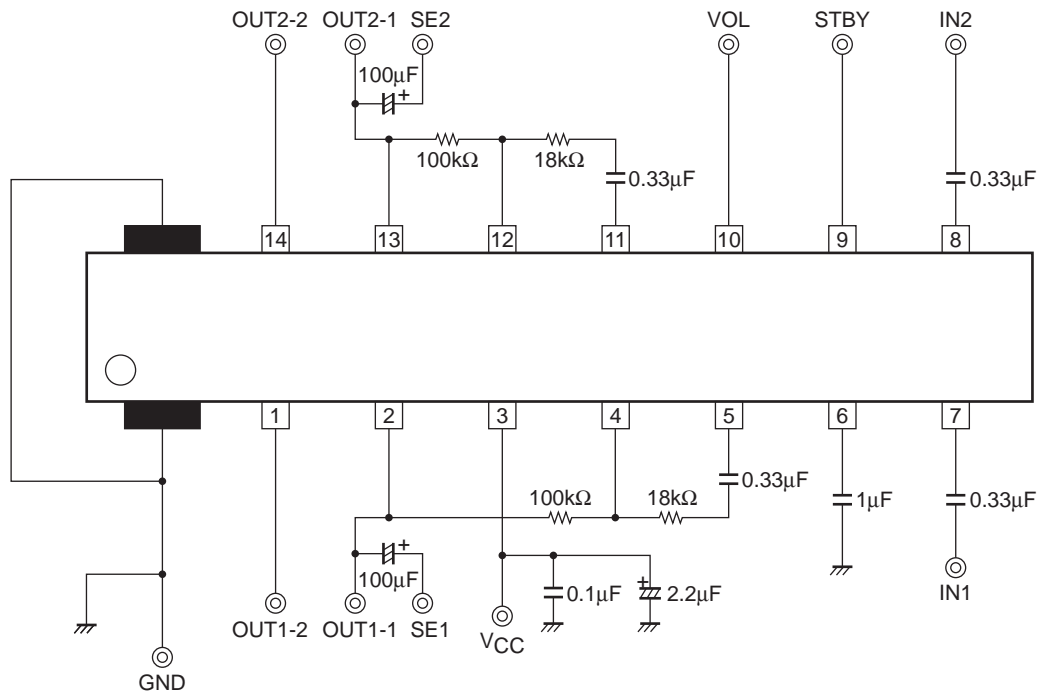


Test Circuit

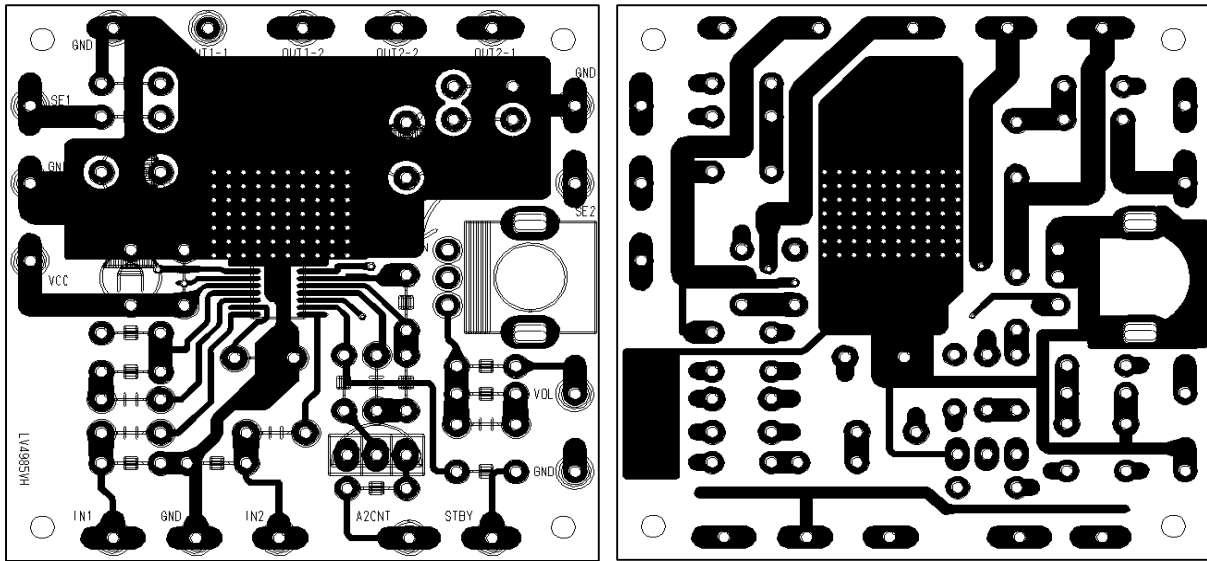


LV4985VH

Evaluation Board Circuit



Evaluation Board Layout (50mm × 50mm × 1.6mm)



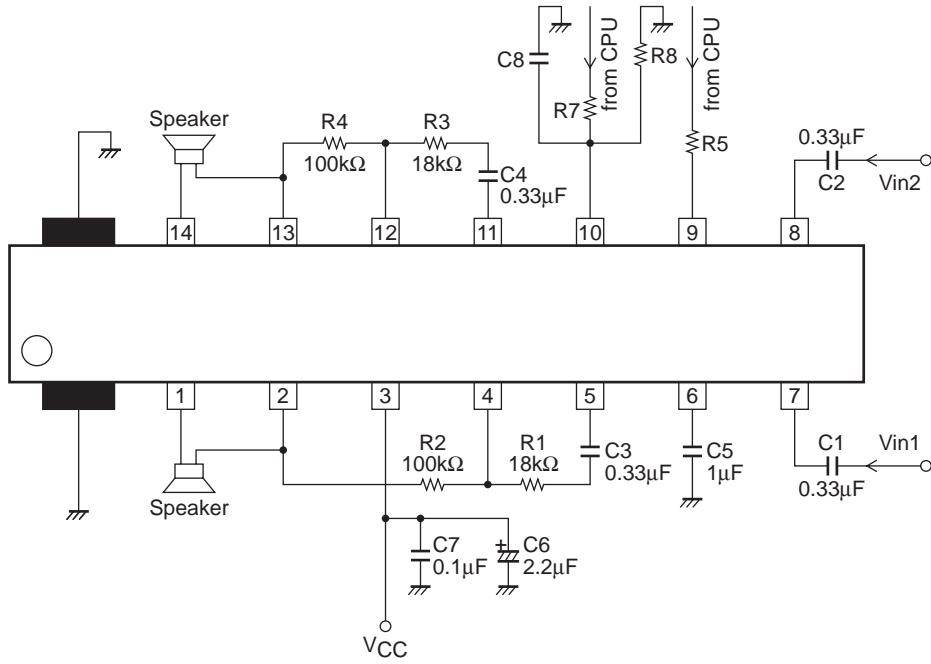
Top Layer

Bottom Layer

LV4985VH

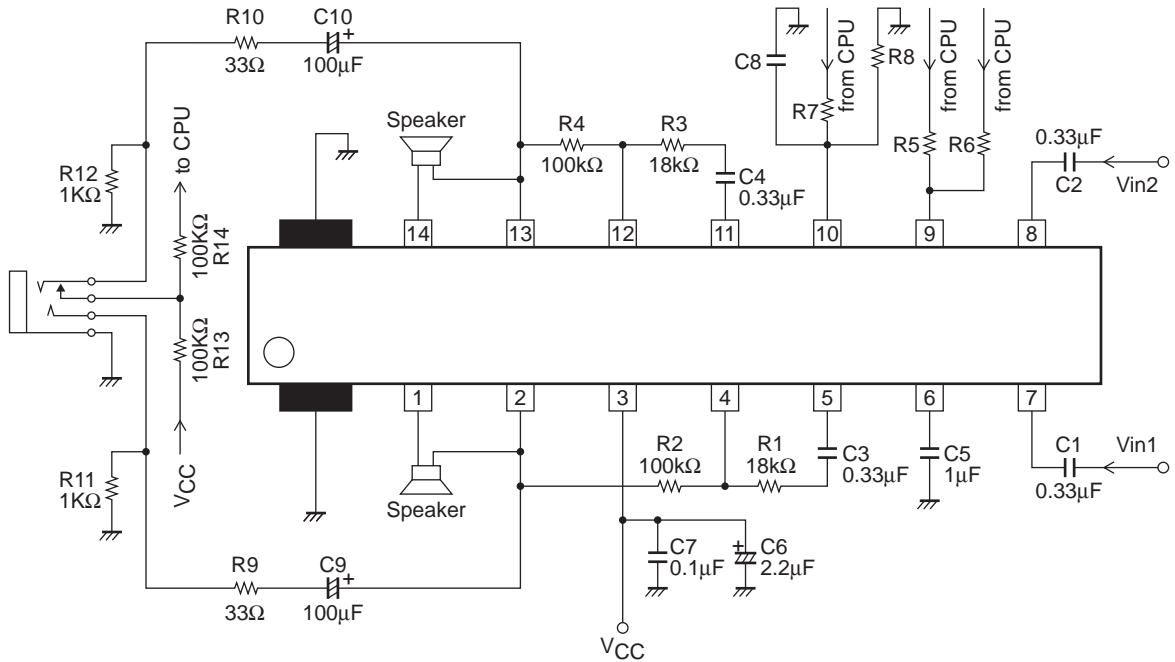
Application Circuit Example 1

(BTL mode only)



Application Circuit Example 2

(BTL mode/SE mode changeover)



LV4985VH

Pin Functions

Pin No.	Pin Name	Pin Voltage	Description	Equivalent Circuit
		$V_{CC} = 5V$		
1 14	OUT1-2 OUT2-2	2.49	Power amplifier 2nd output pin.	
2 13	OUT1-1 OUT2-1	2.49	Power amplifier 1st output pin.	
3	V_{CC}	5.0	Power supply pin.	
4 12	PIN1 PIN2	2.49	Power amplifier input pin.	
5 11	VLOUT1 VLOUT2	2.49	Volume output pin.	
6	VREF	2.49	Ripple filter pin. (for filtering capacitor connection)	
7 8	IN1 IN2	0	Input pin.	

Continued on next page.

LV4985VH

Continued from preceding page.

Pin No.	Pin Name	Pin Voltage	Description	Equivalent Circuit
		V _{CC} = 5V		
9	STBY	External apply	Standby/2nd amplifier stop control pin. 0 to 0.3V ⇒ Standby mode 1.3 to 1.7V ⇒ SE mode 2.3 to V _{CC} ⇒ BTL mode	
10	VOL	External apply	Volume control pin.	

Usage Note

1. Input coupling capacitor (C1 and C2)

C1 (C2) is an input coupling capacitor that is used to cut the DC component. The input coupling capacitor C1 (C2) and the input resistors of 20kΩ (15kΩ + 5kΩ) make up a high-pass filter, attenuating the bass frequency. Therefore, the capacitance value must be selected with due consideration of the cut-off frequency.

The cut-off frequencies are expressed by the following formulas.

$$1\text{ch} \Rightarrow fc1 = 1 / (2\pi \times C1 \times 20000)$$

$$2\text{ch} \Rightarrow fc2 = 1 / (2\pi \times C2 \times 20000)$$

This capacitor affects the pop noise at startup. Note with care that increasing the capacitance value lengthens the charging time of the capacitor, which will make the pop noise louder.

2. Input coupling capacitors (C3 and C4) in the power amplifier block

C3 (C4) is an input coupling capacitor that is used to cut the DC component. The input coupling capacitor C3 (C4) and the input resistor R1 (R3) make up a high-pass filter, attenuating the bass frequency. Therefore, the capacitance value must be selected with due consideration of the cut-off frequency.

The cut-off frequencies are expressed by the following formulas.

$$1\text{ch} \Rightarrow fc3 = 1 / (2\pi \times C3 \times R1)$$

$$2\text{ch} \Rightarrow fc4 = 1 / (2\pi \times C4 \times R3)$$

This capacitor affects the pop noise at startup. Note with care that increasing the capacitance value lengthens the charging time of the capacitor, which will make the pop noise louder.

3. BTL voltage gain of the power amplifier block

The voltage gain of the first amplifier is determined by the ratio between the resistors R1 and R2 (R3 and R4).

$$1\text{ch} \Rightarrow Vg1 = 20 \times \log (R2/R1) \dots \text{unit : dB}$$

$$2\text{ch} \Rightarrow Vg2 = 20 \times \log (R4/R3) \dots \text{unit : dB}$$

Therefore, the BTL voltage gain of the power amplifier block is expressed by the following formulas.

$$1\text{ch} \Rightarrow VgBTL1 = 6 + 20 \times \log (R2/R1) \dots \text{unit : dB}$$

$$2\text{ch} \Rightarrow VgBTL2 = 6 + 20 \times \log (R4/R3) \dots \text{unit : dB}$$

The BTL voltage gain of the power amplifier block must be set in the range of 0 to 26dB.

4. pin 6 capacitor (C5)

This capacitor is a ripple filter capacitor. The internal resistors ($600k\Omega + 50k\Omega$) and C5 make up a low-pass filter that is used to reduce the power supply ripple component and increase the ripple rejection ratio.

Note that inside the IC, the rising-transient-response-characteristic of the pin 6 voltage (reference voltage) is used to activate the automatic pop noise reduction circuit. Therefore, when reducing the C5 capacitance value to increase the voltage rise speed, the design should take into account that the pop noise increases during voltage rise.

5. Power supply line capacitor (C6 and C7)

The bypass capacitor C7 is used to remove the high frequency component that cannot be eliminated by the power supply capacitor C6 (chemical capacitor). Place the bypass capacitor C7 as near to the IC as possible, and use a ceramic capacitor with good high frequency characteristics.

When using a stabilized power supply, these capacitors can also be combined into a single $2.2\mu\text{F}$ ceramic capacitor. Note that when the power supply line is relatively unstable, the power supply capacitor C6 capacitance value must be increased.

6. Load capacitance

When connecting a capacitor between the output pin and ground to suppress electromagnetic radiation or other purposes, the effects of this capacitor may cause the power amplifier phase margin to be reduced, resulting in oscillation. When adding this capacitor, care should be taken for the capacitance value.

Recommended capacitance value : 1000pF to $0.1\mu\text{F}$

7. Headphone drive

When also using the BTL amplifier's first amplifier as the headphone amplifier, it is recommended to adjust the level by inserting series resistors R9 (R10) to the signal line as shown in Application Circuit Example-2.

Note that this series resistor, the headphone load resistance and the output coupling capacitors C9 (C10) make up a high-pass filter, so this should be taken into account in the design. The cut-off frequencies are expressed by the following formulas.

$$1\text{ch} \Rightarrow fc5 = 1 / (2\pi \times C9 \times (R9 + R_L))$$

$$2\text{ch} \Rightarrow fc6 = 1 / (2\pi \times C10 \times (R10 + R_L))$$

8. Standby pin (pin 9)

As shown in Figure1, by controlling the standby pin, the mode changeover can be made between standby mode, single-ended (SE) operating mode, and BTL operating mode.

State	Pin 9 voltage	Port A	Port B
Standby mode	0V to 0.3V	Low	Low
SE operating mode	1.3V to 1.7V	High	Low
BTL operating mode	2.3V to V_{CC}	High	High

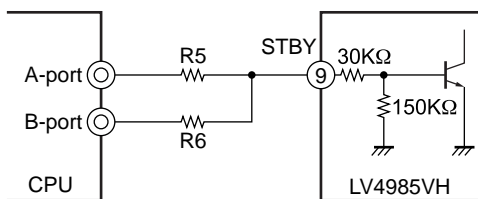


Fig. 1

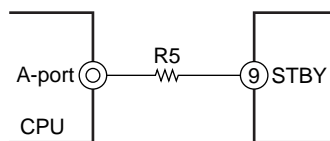


Fig. 2

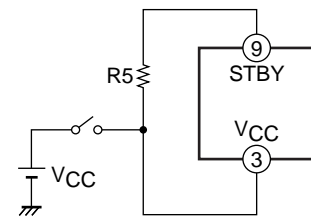


Fig. 3

When not using the single-ended operating mode, a direct control is possible by connecting the standby pin to the CPU output port. However, it is recommended to insert a series resistor R5 ($1k\Omega$ or more) as shown in Figure 2 in case the pin is affected by the digital noise from CPU.

In addition, when not using the standby mode, the pin 9 can also be used interlocked with the power supply as shown in Figure 3. Since there exists an internal current limiting resistor ($30k\Omega$), the series resistor R5 can be eliminated, but the current I_9 expressed by the following formula flows through the pin 9, so this should be taken into account in the design.

$$\text{Pin 9 inflow current (unit : A) : } I_9 = 4.7 \times 10^{-6} + (V_{CC} - 0.7) / (R_5 + 30000)$$

9. Electronic volume control (pin 10 control)

By changing voltage applied to the pin 10, the voltage gain of the built-in VCA(variable control amplifier) is varied. Since the ripple component of applied voltage is generated, a stabilized power source must be used.

When controlling the amplifier using the PWM signal from the CPU, use a resistor and capacitor for DC conversion as shown in Figure 4 and adjust the voltage gain by changing the pulse width of PWM signal. In this case, the frequency of PWM signal used must be higher than audio frequency band.

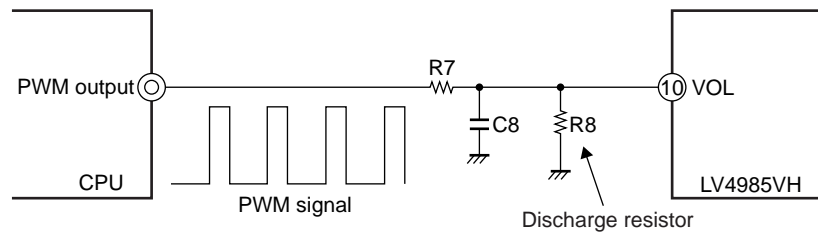


Fig. 4

10. Thermal protection circuit

The IC has a built-in thermal protection circuit that can reduce the risk of breakdown or degradation when the IC becomes abnormally hot for some reason. When the internal chip junction temperature T_j rises to approximately 170°C , this protective circuit operates to cut off the power supply to the power amplifier block and stop signal output.

Operation recovers automatically when the chip temperature drops to approximately 130°C .

Note that this circuit cannot always prevent breakdown or degradation, so sufficient care should be taken for using the IC. When the chip becomes abnormally hot, immediately turn off the power and determine the cause.

11. Short-circuit between pins

Turning on the power supply with the short-circuit between terminals leads to the deterioration and destruction of IC. When fixing the IC to the substrate, please check that the solder is not short-circuited between the terminals before turning on the power.

12. Load Short-circuit

Leaving the IC in the load short-circuit for many hours leads to the deterioration and destruction of the IC. The load must not be short-circuited absolutely.

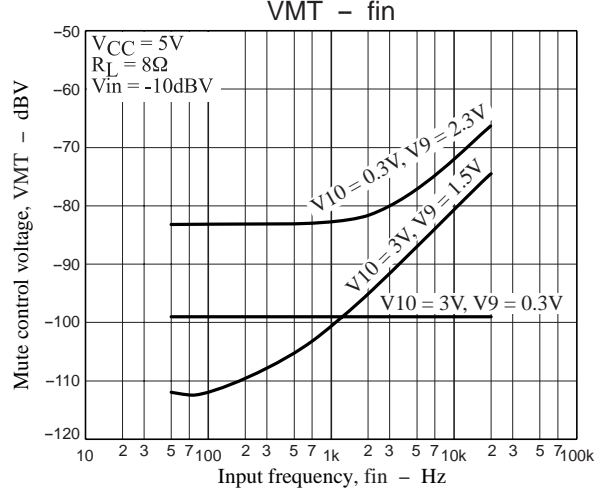
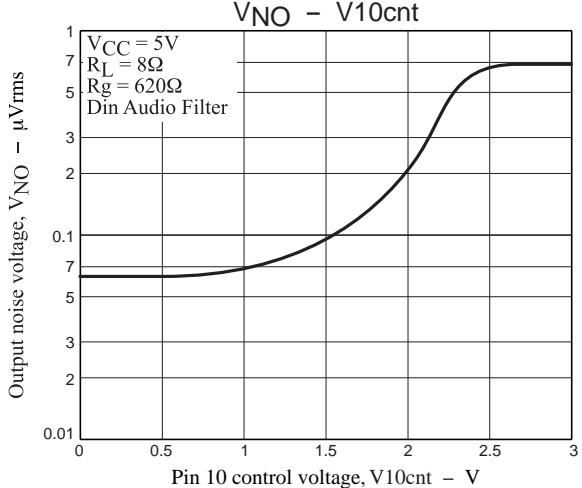
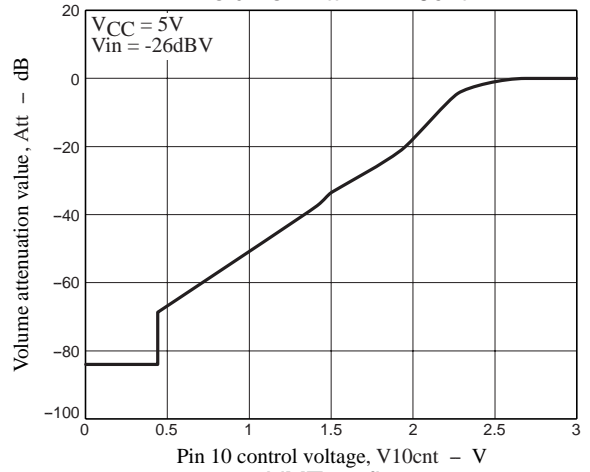
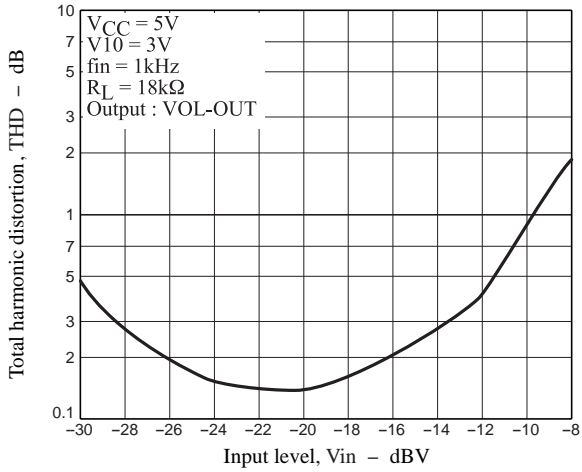
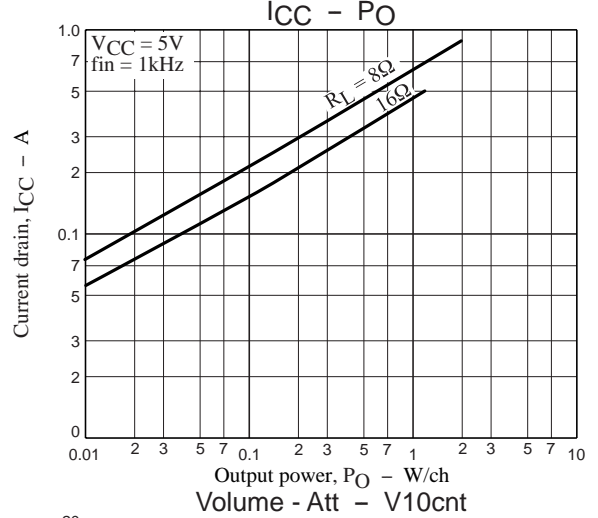
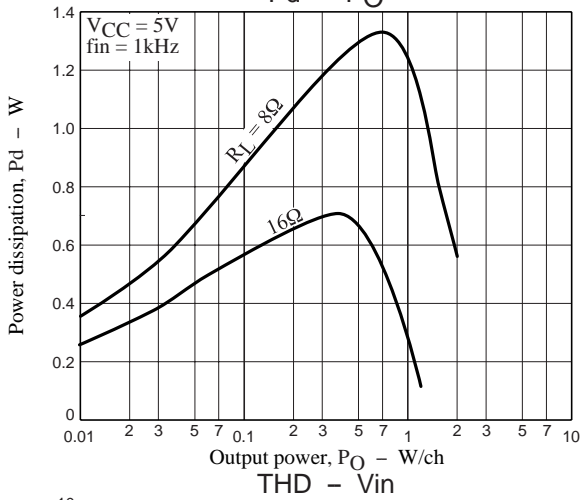
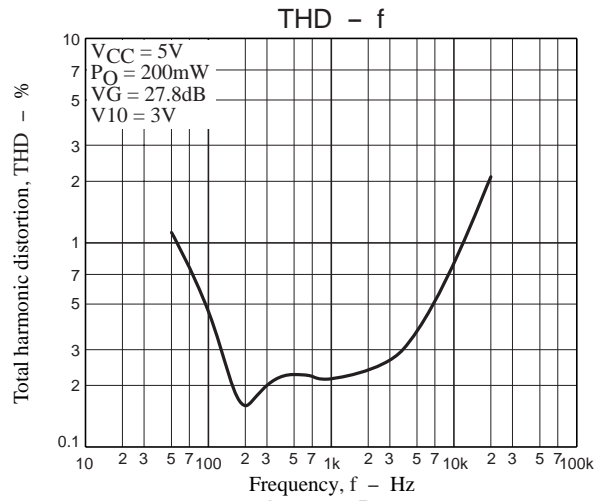
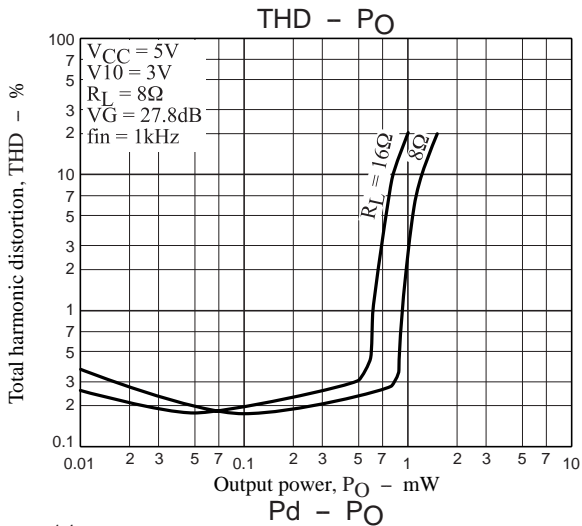
13. Maximum rating

When the rated value used is just below to the absolute maximum ratings value, there is a possibility to exceed the maximum rating value with slight extrusion variable. Also, it can be a destructive accident.

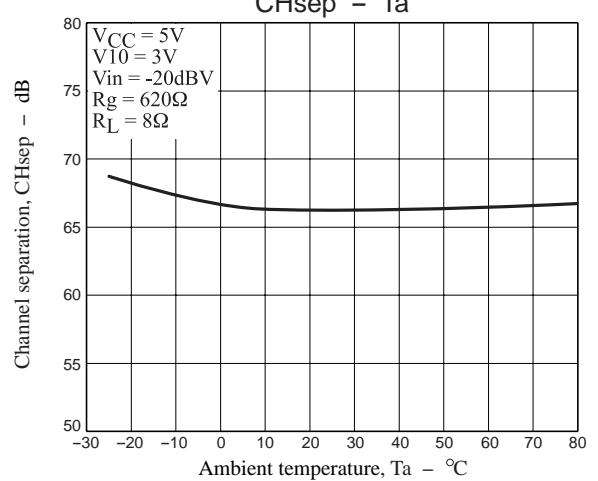
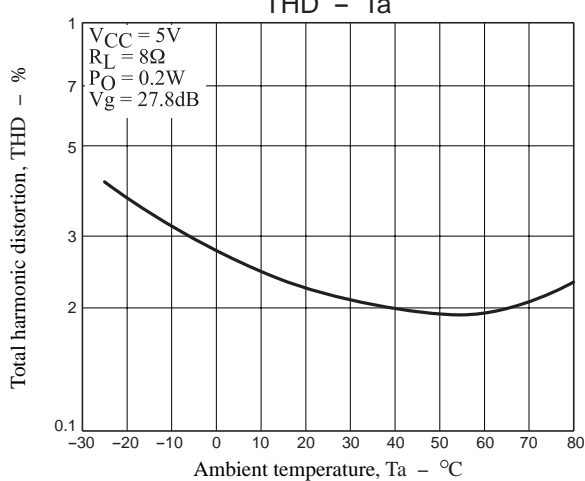
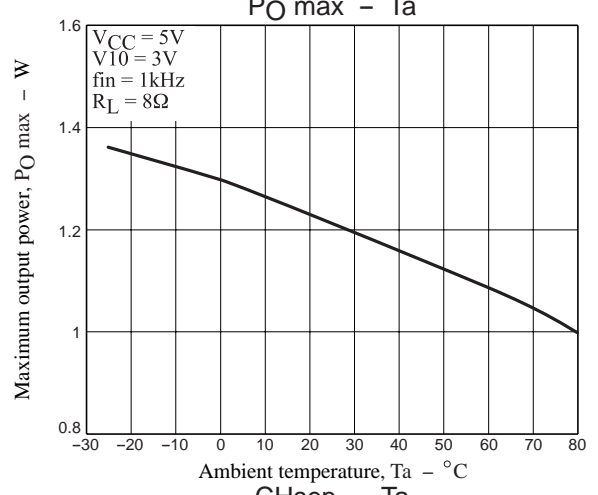
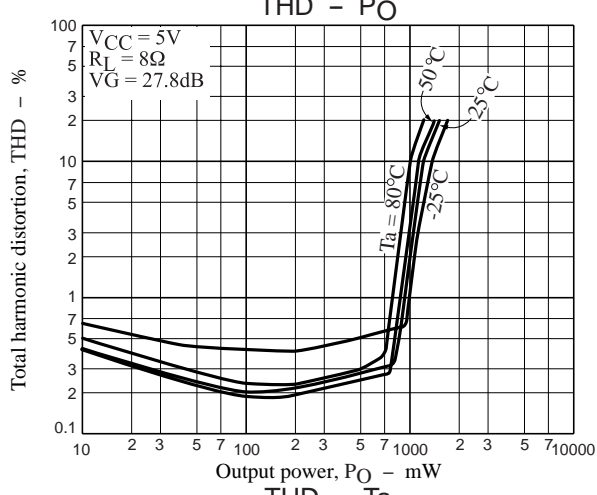
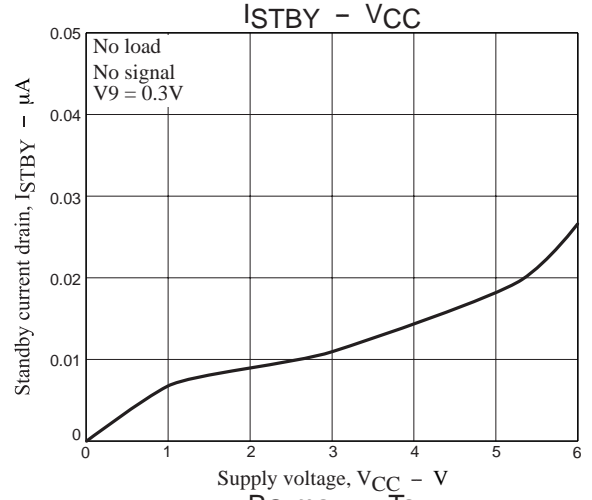
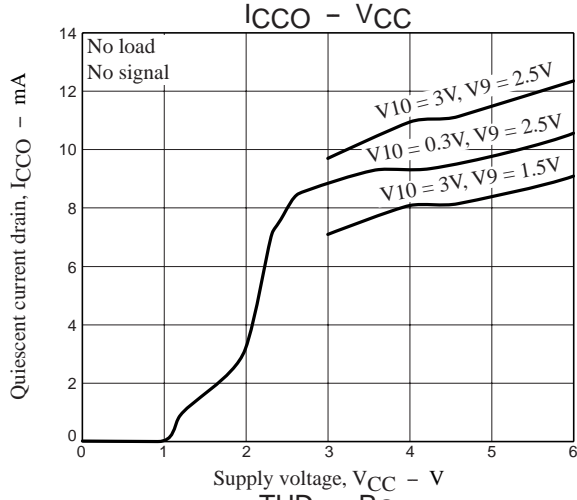
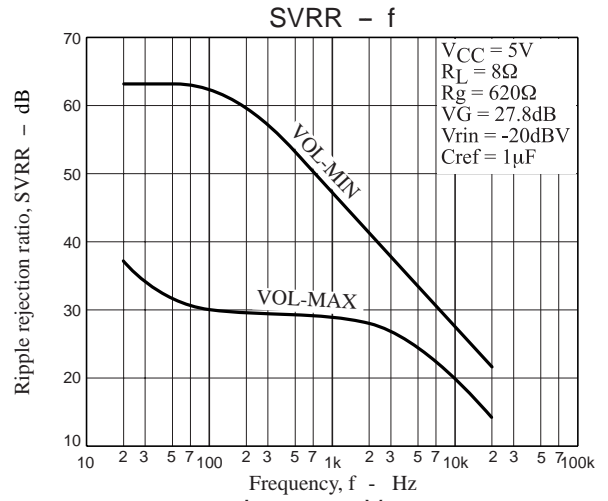
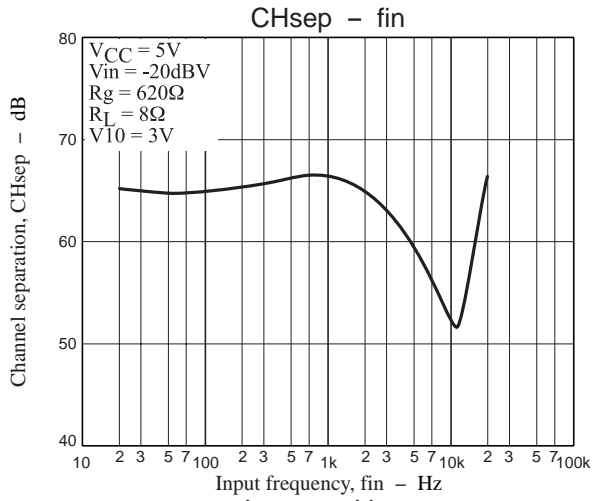
Please use within the absolute maximum ratings with sufficient variation margin of supply voltage.

In addition, the package of this IC has low thermal radiation characteristics, so secure sufficient thermal radiation by providing a copper foil land on the printed circuit board near the heat sink.

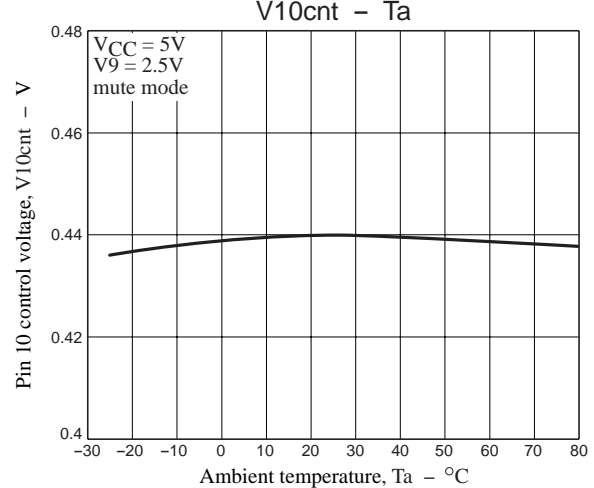
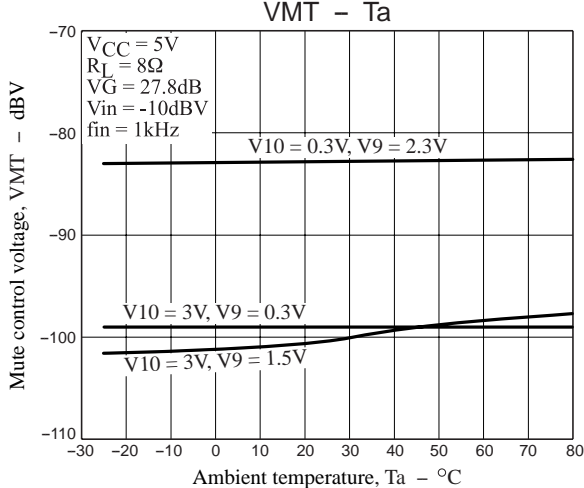
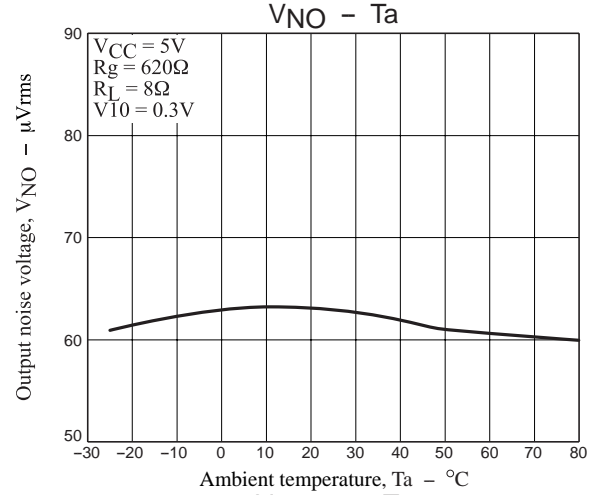
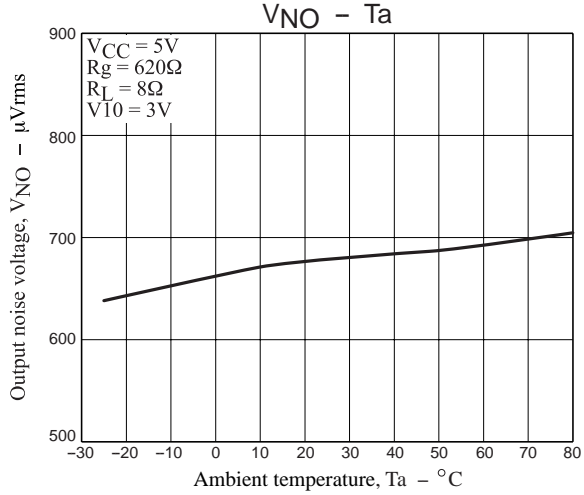
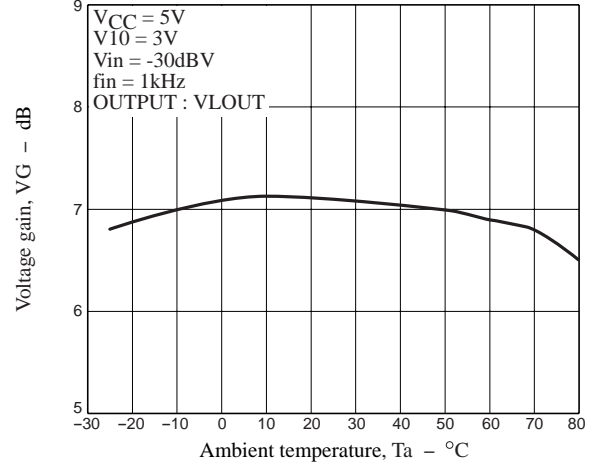
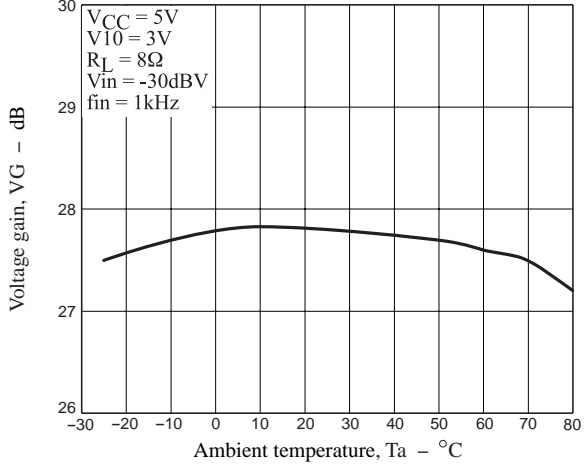
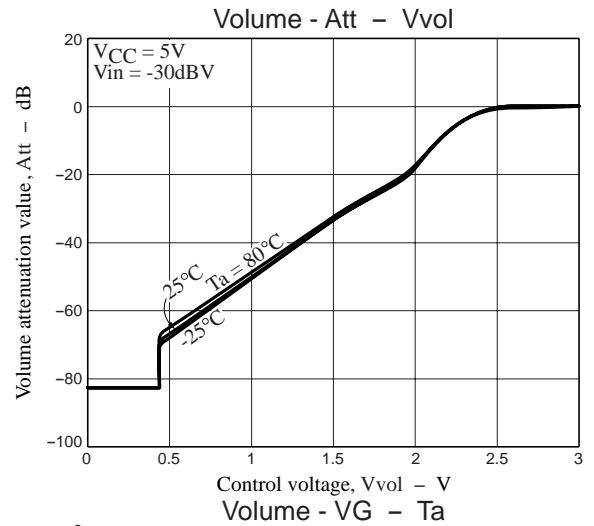
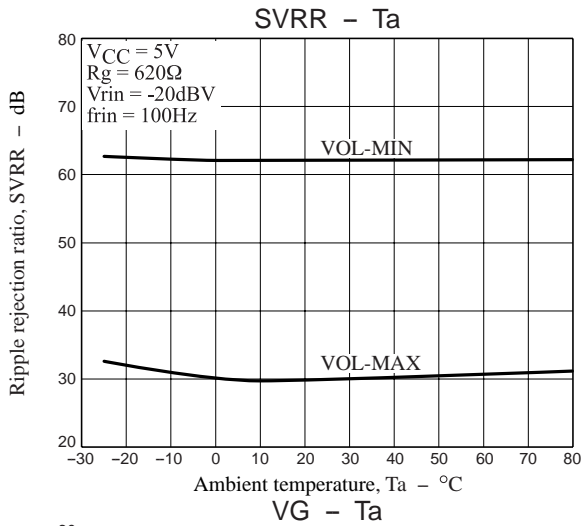
LV4985VH



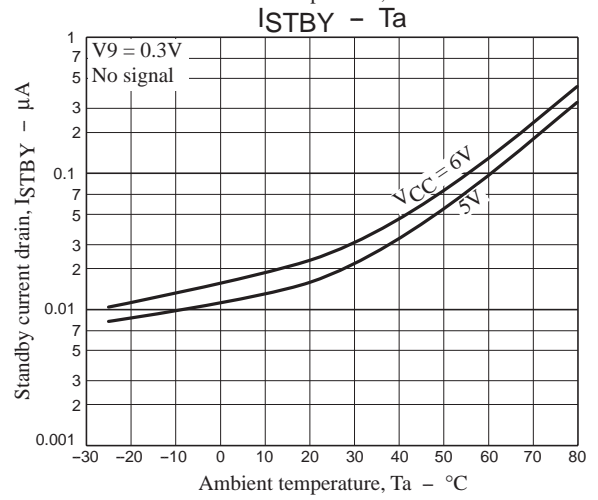
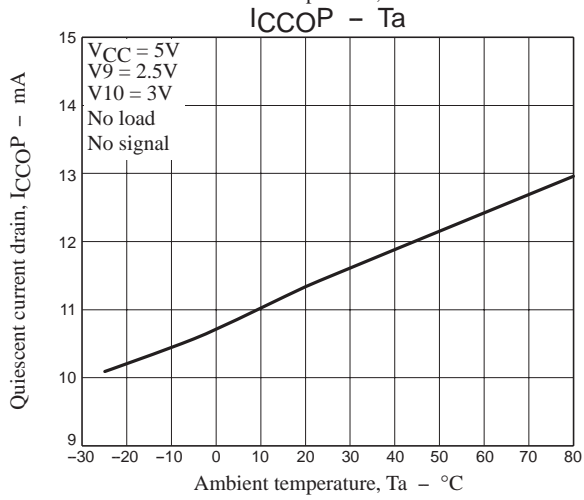
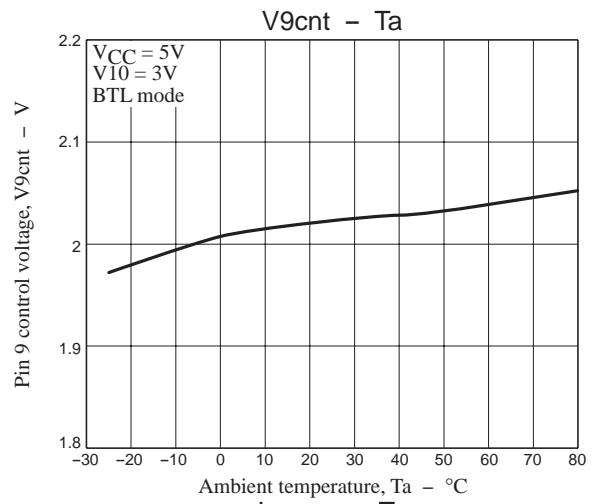
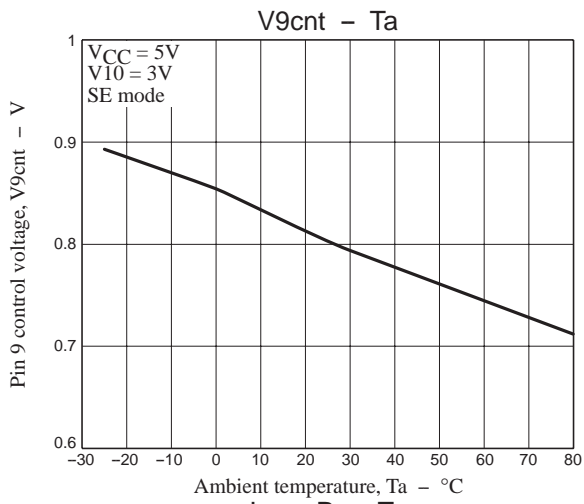
LV4985VH



LV4985VH



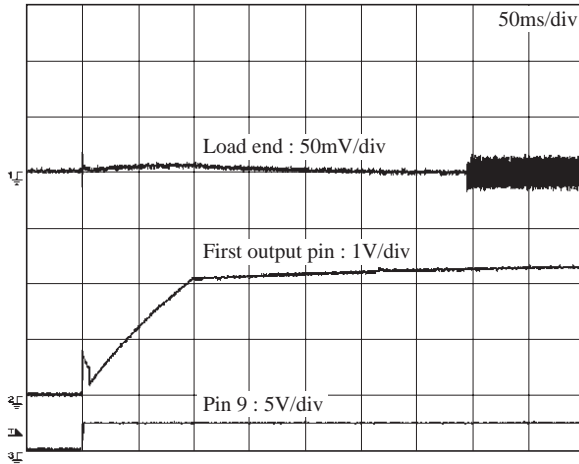
LV4985VH



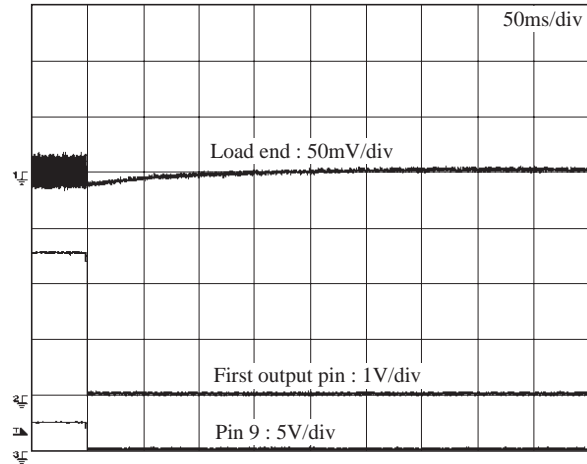
LV4985VH

●Transient response characteristics (volume max. setting)

Rising (V9 ⇒ high) characteristics

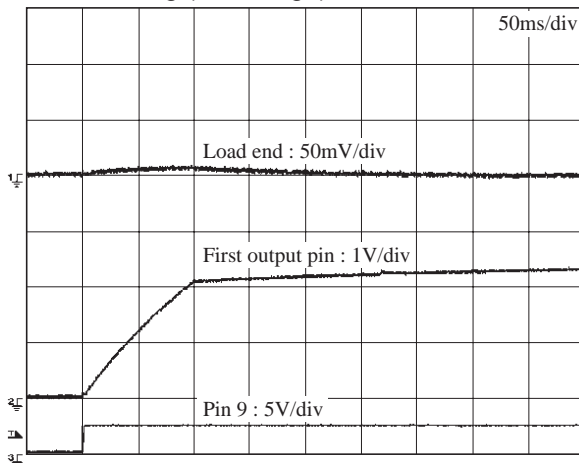


Falling (V9 ⇒ low) characteristics

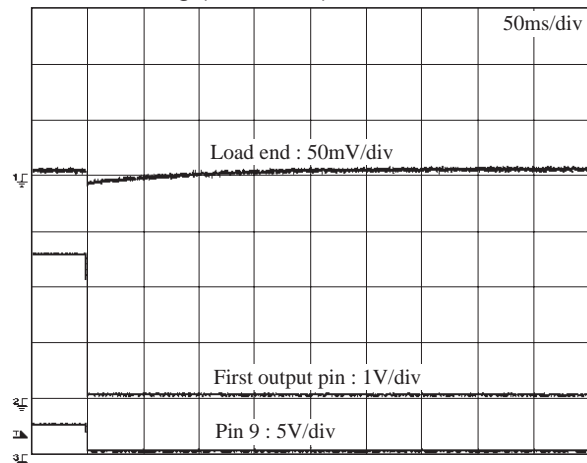


●Transient response characteristics (volume mute. setting)

Rising (V9 ⇒ high) characteristics



Falling (V9 ⇒ low) characteristics



- SANYO Semiconductor Co.,Ltd. assumes no responsibility for equipment failures that result from using products at values that exceed, even momentarily, rated values (such as maximum ratings, operating condition ranges, or other parameters) listed in products specifications of any and all SANYO Semiconductor Co.,Ltd. products described or contained herein.
- SANYO Semiconductor Co.,Ltd. strives to supply high-quality high-reliability products, however, any and all semiconductor products fail or malfunction with some probability. It is possible that these probabilistic failures or malfunction could give rise to accidents or events that could endanger human lives, trouble that could give rise to smoke or fire, or accidents that could cause damage to other property. When designing equipment, adopt safety measures so that these kinds of accidents or events cannot occur. Such measures include but are not limited to protective circuits and error prevention circuits for safe design, redundant design, and structural design.
- In the event that any or all SANYO Semiconductor Co.,Ltd. products described or contained herein are controlled under any of applicable local export control laws and regulations, such products may require the export license from the authorities concerned in accordance with the above law.
- No part of this publication may be reproduced or transmitted in any form or by any means, electronic or mechanical, including photocopying and recording, or any information storage or retrieval system, or otherwise, without the prior written consent of SANYO Semiconductor Co.,Ltd.
- Any and all information described or contained herein are subject to change without notice due to product/technology improvement, etc. When designing equipment, refer to the "Delivery Specification" for the SANYO Semiconductor Co.,Ltd. product that you intend to use.
- Information (including circuit diagrams and circuit parameters) herein is for example only; it is not guaranteed for volume production.
- Upon using the technical information or products described herein, neither warranty nor license shall be granted with regard to intellectual property rights or any other rights of SANYO Semiconductor Co.,Ltd. or any third party. SANYO Semiconductor Co.,Ltd. shall not be liable for any claim or suits with regard to a third party's intellectual property rights which has resulted from the use of the technical information and products mentioned above.

This catalog provides information as of December, 2009. Specifications and information herein are subject to change without notice.